

March 2024

# Becketwood Times

Becketwood Cooperative

4300 West River Parkway South, Minneapolis MN 55406

Tel: 612-722-4077 \* Fax: 612-722-1878 \* [www.becketwood.com](http://www.becketwood.com)



1. Board Actions
2. In Remembrance  
Greta Gantriis
3. Member Services  
Position
4. Kitchen News
6. Love Earth
7. Chapel Update
11. Iftar Trip
12. Founding Mothers
13. Programs
14. Spring Reads
16. March Films

---

## Board Column

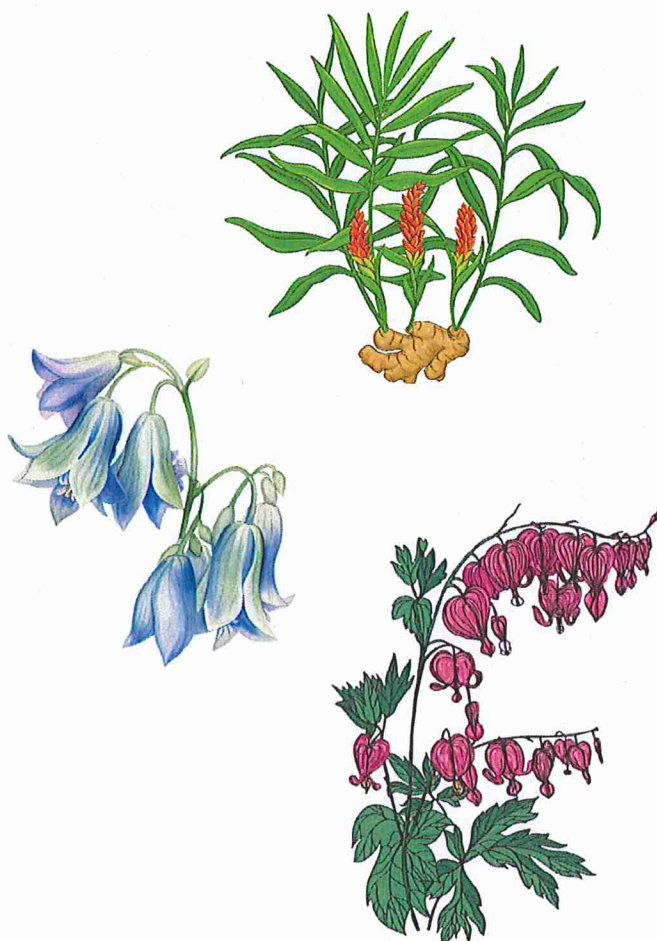
### Grounds Committee

Nancie Hamlett, Chair

It's been a busy month. The February Town Hall hosted by the Grounds Committee enjoyed a presentation by Russ Henry (Minnehaha Falls Landscaping) about the meadow and the science behind their methods of planting. He showed slides of plants and grasses, some of which will be planted in our meadow. Russ also talked in some detail about the need for healthy soil to ensure the health of the plants. His planting methods will incorporate what is needed to develop healthy soil that provides nutrients and significantly increases the soil's ability to act like a sponge and absorb rainwater. Late May or early June will see much activity "up on the hill."

One area of activity this spring/summer will be on the north side of the building, by and on either side of Common Garden #43, aka "the cigar pipe garden." Also, the slope from the sidewalk to the west of that garden, which is a source of erosion, difficult to mow, and for some a safety hazard, will be renewed with shrubs, grasses, and plants. And to the east, in the area surrounding the electrical box, we will enjoy Virginia bluebells, bleeding hearts, wild ginger, and Jacob's ladder, to name a few plants that will add beauty and reduce the compacted soil, allowing it to absorb and filter rainwater coming off the roof.

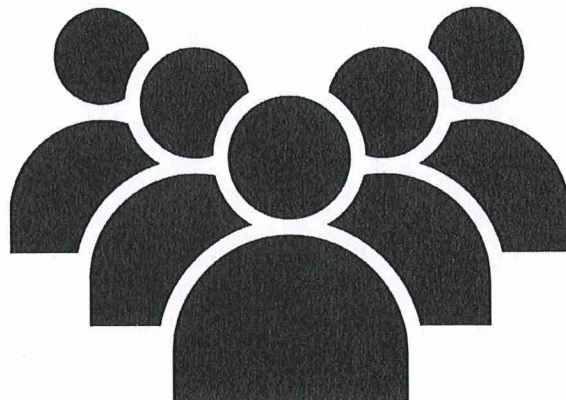
Another goal this spring is to repair areas of the chain link fence where trees have fallen. The sagging gates are also in line for repair. This repair will pave the way for native pollinator-friendly shrubs along the south and west fences, as well as some grapevines to add greenery and food for birds, animals, and humans. The Grounds Committee is organizing a Shrub Working Group to develop a plan for those plantings. If you are interested in participating or getting more information, please contact the Grounds Committee Chair.



---

## Board Actions

1. A Stormwater Management working group has been formed in response to a recommendation from the latest Think Tank. It is composed of Members Nancy Minahan and Jon Marble, staff member Jeff Fahrenholz and Board member Randy Nelson.
2. The Board approved a request from the Workshop for a new air filtration system using its funds.
3. A proposal from MAC to dissolve the Outdoor Living Committee was approved at the request of the Outdoor Living Committee. Regular grill nights will continue under the auspices of a working group.
4. A proposal to refurbish the East and West Dining room walls, the Library wall, and the mailbox wall by stripping wallpaper, removing glue, and patching and painting was approved in an amount not to exceed \$12,600. The work will be done this spring/summer.
5. Renee Showalter and Richard Hanson in unit #267 and Mary Des Roches in unit #472 were welcomed as new Members. The Board declined its option to purchase units #473 and #409 upon receiving the Intention to Transfer Membership from the owners of those units.



---

## **In Remembrance**

Nancy Johnson



**Greta Gantriis**

**May 15, 1934 – February 1, 2024**

Greta Gantriis, an active member of Becketwood's Danish contingent, was one of the so-called "happy Danes" and proud of her heritage. Her loyalty to Becketwood and its needs was unquestioned. She was a longtime member of the Communications Committee and we saw her regularly, diligently posting notices on our bulletin boards. She cared deeply about our Members having important announcements and updates at hand and could be counted on to take care of any last-minute requests.

Greta loved meeting with friends and newcomers during lively conversations in the coffee shop and at Cookie Cart. She was an excellent ambassador for the Becketwood ukulele group, asking, "How can you be sad when you're playing the ukulele?" She wore the Becketwood Ukulele Society t-shirt with pride and often had stories to share about songs the group played. Music was a great pleasure to her.

A good-hearted person who was devoted to her church, she was always willing to help out. For years she took part in the bridge group and before the pandemic years participated in the Socrates Café. Greta spent a good part of the day following the news, as well as knitting and enjoying reading. Her daughter Susie was married in the Becketwood Chapel last summer. Friends knew Greta as outspoken and always clear on where she stood. We will miss her ready smile and greeting, her humor, and her readiness to be of service.

## Executive Manager News

Benjamin Thomas

### Member Services Coordinator Update

Recently several Members have asked about the Member Services Coordinator position: Are we going to partner with Episcopal Homes? (not at this time) Have we hired anyone? (still looking) Who should I talk to about a friend who seems to be having trouble? (Benjamin) These questions are good, and perhaps this update will answer your questions.

The position focuses on transitions: moving into Becketwood, understanding independent cooperative living and, finally, recommending when independent living is no longer a safe or healthy option. The focus is narrower than the previous Member Services Coordinator position because the regulations for age 55+ communities have changed and because the previous position was something of a catchall for administrative tasks. As we continue to streamline office operations to control costs, many tasks have been simplified, handed off to other staff, or discontinued to eliminate redundancy.

The biggest effects of these changes are, first, although Jes moved into the former coordinator's office, she did not become the Member Services Coordinator. Think of Jes as Becketwood's information officer. She keeps the calendar, assists staff and the Board with document management, sets up computers and helps with office-related technical questions. She is not, nor does she hope to be, the Member Services Coordinator. A second thing to note – I am currently doing the "social work" part of this position. Any concerns about Members' health, welfare or their ability to live independently should come to me to be managed in confidence.

## Guiding Principle

Angela Bohmann, Board Secretary

Continuing with the monthly publication of one of Becketwood's twelve Guiding Principles, for March we highlight **Dedication**

**Dedication** – Cooperation needs to be cultivated and nurtured over time, requiring patience, energy, and understanding.

The *Becketwood Times* is published monthly by the Becketwood Cooperative's Communications Committee.

Newsletter Coordinator and Graphic Design: Jes Tormoen

Editors: Phyllis Kromer, Carol Masters, Nancy Johnson

Contributing Writers: Members and Staff of the Becketwood Cooperative.

## Food for Thought

Angela Savluk, Executive Chef



### What's happening in the kitchen?

We had a very successful Sweetheart Dinner. We are glad to hear many Members had a good celebration with great meal service. Allowing for two days of meals for big events has been well received by Members and staff.

### What's happening outside the kitchen?

We have heard the membership's requests and are working on them. The Food Service Committee and I have been working on revising the Wellington Room sign-up book. The new designs and book will be out and ready to be used beginning in March.

We are also introducing a way for Members to feel more comfortable when meeting new people in our dining room. During buffet meal services, you will be able to pick up an "Open Table" sign at the host stand. Place this sign on your table so other Members will know they are welcome to join you for the meal.

If you would like another opportunity to meet people, you can volunteer at Thursday's Cookie Cart! Please contact Greta Berg for more information.

### Special Days to Remember in March:

**Friday, March 15 - Saint Patrick's Day**

**Friday, March 22 - Birthday Bash**

**Sunday, March 31 - Easter Sunday**

## Marketing

Maura Kolars  
Anne Parker



## Sales

On February 1 Denny and Jerry McClelland closed on the membership share of Sheffield Unit #175. Once their painting and renovations are completed they will be joining us from their current home in Roseville. They are excited to become a part of the community and to meet their new neighbors! Several more closings are coming.

## Alterations

Remodeling and renovation projects had a very busy start in 2024. Several of those projects are now completed or are nearing completion, with beautiful results. March will start with fewer projects but as new Members move in, more projects will no doubt be added. If you have any thoughts about a project in your unit, or even just a new appliance, please reach out to Anne with your ideas and questions.

---

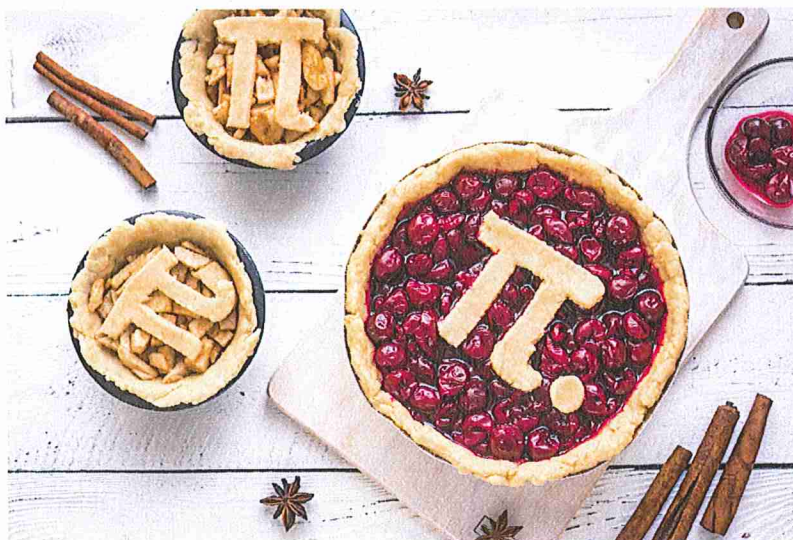
## Pi

Joel Mortensen

Pi Day is traditionally celebrated on March 14 (3.14). This year Becketwood will celebrate on Friday, March 15. The celebration will be part of the evening's dinner and the special treat will be dessert – apple pies that have been made by your neighbors and baked by Angela in our kitchen. I hope you are wondering how that might happen. Here is the plan: Joel Mortensen, who loves to bake pie, will lead a class on pie making. It will cover the fundamentals of a good crust and the wonders of a tasty filling. The class will be held in the West Dining Room that morning at 9:30. A signup sheet and materials list (what you'll be asked to bring to the class) will be on the ledge. We'll provide flour, shortening, lard, and salt for the crust. We'll provide the apples, lemon juice, cinnamon, nutmeg, ginger, cloves and butter. We'll gather from among our Members as many "Johnny Apple Peelers" as we can.

If you are new to pie making and don't have a pastry cloth or a rolling pin, we'll share. At eight pieces per pie and an average of 42 diners per meal, we only need six pies. But I am hopeful that this dessert treat will raise attendance and we'll need more. If we have more pies than diners, we might have to auction off the extras and contribute the proceeds to the Chapel fund.

There is no magic or secret formula for making a good pie, just patience. And even though 19 years of trying didn't win me a ribbon at the state fair, my family insists they are really good. I want to share that experience and help you learn that you, too, can be a great pie maker.



## Naturalist's Notes: Love This Earth

Naomi Jackson

As I write this article, it's mid-February and nothing seems normal. Woodpeckers are drumming, maple trees blossoming, spring bulbs poking up, buds swelling, all too early. Unfortunately our too-warm, too-dry winter was not an anomaly. It's a harbinger. We know something is wrong, seriously wrong, with our weather. But what can one person, or 270 people, do? We do what we can. We start with our relationship with the earth. The more we learn to love the earth and its inhabitants, the better we will understand how to help.

Here's a simple way to start. Pick one native plant or animal, insect or bird that can be found at Becketwood: bluebirds or owls or flickers, hackberry or oak trees, swallowtail or monarch butterflies, foxes or chipmunks or tree frogs, trillium or milkweed. Learn all you can about that one species. Visit the Member gardens or walk our grounds and see which flowers butterflies prefer, where birds look for food, which plants host the most insects (not counting Japanese beetles!), and which trees might offer food or nesting options.

Learn what your animal or plant needs to be healthy. Find out what other living beings depend on it. Think about it as a friend that you care about, and offer what help that you can. You will be amazed at what a difference we can make by loving and understanding the inhabitants of the land where we live. For resource ideas, contact me: [nuthatchnj@gmail.com](mailto:nuthatchnj@gmail.com).



## Member Gardens

Lois Hamilton, Chair

### 2024 Member Garden Signup

Signup sheets for garden plots will be available on the ledge from **Monday, March 4 through Friday, March 22 at 5 pm.**

Everyone who signs up for a garden plot is expected to personally plant and care for an assigned plot throughout the growing season. Relying on help from family members or friends does not satisfy the active gardener requirement.

Plot assignments will be made based on one plot per active gardener. Returning gardeners wanting the same plot still need to sign up. If you want to request a different garden plot, please indicate that on the signup sheet.

The new maps of garden plot assignments, along with the Policy for Assignment of Member Garden Plots, will be distributed to each gardener's mailbox by mid-April.

If you have questions or concerns, please contact the Member Garden Subgroup. Members are Judy Bahn, Jan Ekern, Lois Hamilton, Emily Slowinski, Marcie Wallace, Roberta Nagan and Jon Riehle. We will be glad to respond to your questions.

---

## Common Gardens

Nancy Minahan

You may find yourself thinking about gardens, flowers, and spring now that March is here. Over the winter, planning has been underway for the restoration of the garden by the big exhaust "cigar pipe," and we are currently in conversation with vendors with hopes to install the garden in late spring. Since the area is in constant shade, we hope to plant a variety of native woodland flowers. In addition to beauty, a goal is to provide support for native pollinators and birds.

As always, we have a spring turnover of stewards for the 60 Common Gardens around the building. Being a steward, who plans and cares for a garden, is an opportunity to use one's creative love of plants and flowers to enhance our grounds. Particularly welcome are new Member stewards, many of whom have enjoyed caring for gardens in their previous homes. We also need helpers to join in the occasional weeding or digging across the seasons. Please contact Nancy Minahan, Common Gardens Coordinator, if either opportunity – to steward or to help stewards – interests you.

Late April will bring our Spring Gardens kick-off party, an enjoyable way to begin the season. Look for further information as April nears.

If you have questions, contact the Member Garden Committee: Lois Hamilton, Emily Slowinski, Marcie Wallace, Judy Bahn and Jan Ekern.

## Chapel Renewal Update

Kathleen Cameron

Becketwood's Spiritual Resources Committee continues to work toward a renewal of the 1922 Chapel building. The most important part of the work now is to raise the funds for chapel renewal and for rebuilding the pillars of the Sheltering Arms gates. Although early results are encouraging – and the Spiritual Resources Committee has committed 100% to the plan – we still need your help! Please support the fundraising. Checks can be made out to Becketwood with the words "Chapel donation" in the subject line and dropped off with Stacy in the office.

One of the early parts of the plan was to remove the child-height pews. Availability was advertised in the *Buzz* earlier this year, and every pew is now spoken for. Most will go to children of Becketwood Members. We'll keep several of them for Chapel use.

If you have questions about making a gift or sponsoring a particular feature of the Chapel renewal, please speak to Matt Floding, Kathleen Cameron, Susan Devries, Ruth Halvorson, or Anita Doyle. We are all happy to talk with you about this exciting project. We thank you for your interest and hope to see the fundraising totals rise very soon.

---

## Member Activities Council (MAC)

Kris Gjerde, Chair

### Who are we?

When I served as chair of the Pantry Committee, I was clear it was not a standing committee, but rather a part of the Member Activities Council (MAC). What I didn't grasp was that MAC is one of the Standing Committees created by the Board of Directors. The MAC Committee is formed by the chairs of Member committees engaged in Becketwood programming. An active and engaged membership influences what we have to offer each other.

These MAC Committees create opportunities for Members to contribute to our Cooperative, adding value, building community, and providing an opportunity for socialization. Over the next months, you will read more about the individual MAC committees and what they do. We hope you will find new opportunities of interest for more exploration. Contact any committee or workgroup if you wish to learn more.

### Upcoming MAC 2024 Committee Series in the *Times*

Environment  
Library  
Program  
Communications  
Wellness  
Excursion  
Spiritual Resources  
Creative Arts  
Pantry  
Workshop

## Environment Committee

Susan Sisola, Chair

### Who Are We? 1st in a series

The Environment Committee has been an important part of Becketwood's community life since 2001. While specific projects have varied over time, the focus remains on being good stewards of our land, educational opportunities for our Members, and responding to our understanding of the impacts of global warming. You may be most familiar with the work of our sub-groups, Recycling and Energy Conservation, Alternative Energy, and Grounds/Turf.

Our Mission Statement is "The climate crisis is upon us. The Environment Committee strives to support Becketwood in mitigating the causes and effects of climate change." Our efforts are most successful when we collaborate with other committees and Becketwood Members, who continue to be receptive and willing partners!

We welcome all who may be interested in joining us, or who might enjoy shorter-term projects as "Friends of the Committee." **We meet the first Thursday of each month at 1:30 pm in the Windsor Room.** We look forward to hearing your ideas.

---

## Creative Arts Committee

Mary Henderson

Here are comments we've heard about the recent creative art classes.

Judy Solmonson says, "Charlie and Janet bring new opportunity for creativity. Their class helps spark new ideas and is great fun." And from another student, "The Playful Gathering winter class was great fun, from the collage making to the writing." It's exciting to have such positive feedback.

We are aware that when considering retirement, many people think of painting, creating pottery, writing poetry or returning to a hobby put aside for lack of time. As one of the joys of growing older, we now have time to follow those creative urges. Others among us have been able to use our talents and artistic abilities all along, developing real expertise.

So... we are planning a survey of Members to help us with our next offerings. Our hope is to hear as much as possible about what you'd like to learn, or maybe what you'd like to teach others who live here. Please watch for the survey in your apartment mailbox, and give us as much information as possible.



## Ongoing Creative Arts Gatherings:

### Cardmaking, Tuesdays at 10

Creative Arts/Craft Room

### Quilting, Fridays at 10

Creative Arts/Craft Room

### Yarn Group, Fridays at 10

Solarium

### Creative Arts Committee Meeting,

**Tuesday, March 12, 10:45**

Creative Arts/ Craft Room

## Art Committee

Jean Swanson

Two members of the Scandinavian Weavers Study Group of the Weavers Guild of Minnesota will give a gallery talk on **Thursday, March 14 at 7 pm in the Wellington Room and the East and West Galleries.**

Robbie LaFleur is the group's coordinator and editor-publisher of the digital Norwegian Textile Letter.

Lisa-Anne Bauch is an active member and manages the group's blog at [scandinavianweaversmn.com](http://scandinavianweaversmn.com).

Look for more information about their presentations in the *Buzz*.

---

## Becketwood Choir

Jean Geissler, Director

Black History Month inspired Becketwood Choir's music during the early part of 2024, which included "When the Saints Go Marching In," "Ezekiel Saw the Wheel" and "I Want Jesus to Walk With Me." Songs for March 27 Lessons and Prayers will express themes of Holy Week.

According to Julene Johnson, a neuroscientist, "Overlooked benefits that involvement with music can bring include: Dancing with music will improve physical function. Research shows that singing in a choir eases loneliness and improves self-esteem. For caregivers, music is something to think about as part of your care plan."

Also, the new film *Kiss the Future*, produced by Matt Damon and Ben Affleck, documents how music and art were used to effect change and garner global attention following the 1990s siege of Sarajevo.

**We meet at 4 pm each Wednesday in the Windsor Room**, right after the Midweek Gathering.

Questions?

Call Jean (612-455-9293).

## Communications Reminders

Phyllis Kromer

PLANNING A POLITICAL CANDIDATE MEETING?

CHECK BECKETWOOD POSTING GUIDELINES:

Notices of political candidate meetings sponsored by individual Members can be posted only on the north bulletin board.

Members may distribute flyers in unit mailboxes to announce such meetings.

Notices for sponsored Program Committee political candidate meetings may be posted on all bulletin boards and easels.



## Upcoming Excursions

Mary Shamrock

### **Ramadan Iftar Dinner**

**Tuesday, March 12 - 6 pm**

Rabata Cultural Center, Arden Hills, MN 55126

Bus Departs: 5:15 pm - Returns Approx: 9:15 pm

Gretchen Goodman, coordinator

There will be no charge for the dinner – only for the Becketwood bus transportation. (Sign up for the bus on the ledge.) Each attendee is required to register online at the takingheart link on the Minnesota Council of Churches website for the specific location and date they plan to attend.

Please complete your online registration as soon as possible. Each event has a limited number of guests. If you need help with the process, please text or call coordinator Gretchen Goodman at 612-554-1315. Check out the Rabata Cultural Center website, <https://www.rabata.org>; we expect it will pique your interest.

### **Feast, Black Forest Inn**

**Friday, March 15**

\$60.00 for Dinner and the Show

Bus Departs: 5:45 pm - Returns: Approx 9:15 pm

Roberta Pisa, coordinator

All meals served with soup (homemade borscht - vegan), bread, and one non-alcoholic beverage

Meal 1: Szegediner (German pork and sauerkraut goulash) and spätzle\*

Meal 2: Chicken Paprikash (on the bone) and spätzle\*

Meal 3: Potato goulash and mixed greens salad (vegan and GF- meal)

\*spätzle is a traditional German noodle. It contains flour, eggs, and milk.

### **Orchestra Hall**

**Thursday, March 21, 11 am**

Bus Leaves: 10 am - Returns 1:30/45

Mary Shamrock, coordinator

### ***The Color Purple Musical***

**Saturday, March 30, 2 pm**

Theater Latte Da

Cost: \$38 (\$28 for a group of 15)

Bus Leaves: 1:15 pm - Returns 4:45/5 pm

Elaine Kirk, coordinator

---

## Diversity, Equity, and Inclusion Committee

Lyn Pegg

### Becketwood's History and Our Founding Mothers

During Women's History Month, we are called to honor women who have contributed to our lives and our community. Over the past two months, eight history seekers and memory keepers have been delving into the "who, where, and what" of how Becketwood came to be a vibrant cooperative nestled in a beautiful oak savannah. In our search for information about the history of the founding of Becketwood, we honor women who have contributed to the creation of our community.

Did you know that...

- In the mid-1880s Richard Martin, a developer from New York City, bequeathed to Sister Annette Relf over 130 acres of land along the Mississippi River.
- His bequest supported Sr. Annette's commitment to serving the "poor and needy," and she founded an orphanage and a home for aging women.



- The Episcopal Church Home purchased 12 acres of that land in 1982 and offered it to the ECH Development Committee to fulfill its vision to create a housing complex for people over age 55 to live independently in a Member-owned cooperative.
- The Development Committee has become known as the "Founding Mothers" of Becketwood.
- Gloria Delano, one of the Founding Mothers, lives among us in Becketwood.

Our working group asks for your help bringing this history to all Members. Perhaps you have photos of the Founding Mothers and memorabilia with information about the development of Becketwood and its opening in 1986.

We look forward to sharing this story of the founding of Becketwood. Your treasures and your curiosity are welcome!

The history seekers and memory keepers are Gretchen Goodman, Helen Grant, Diane Greve, Ruth Halvorson, Carol Mockovak, Iric Nathanson, Lyn Pegg and Vera Watson.

---

## Program Committee

Carolyn Folke

During March the Program Committee will sponsor several exciting events. We are pleased to announce a performance by five members of The Isles Ensemble, a group of well-known professional musicians. The *Star Tribune* called them the "cream of the Twin Cities classical musicians." Their performance is cosponsored with DEIC and will feature music from Spanish-speaking countries as well as from often-ignored women composers. We are fortunate to have these musicians come to Becketwood.

In addition, we welcome Lori Sturdevant as the second speaker in our Public Affairs Series featuring local journalists. Becketwood is fortunate to welcome a noted journalist. On the heels of Lori Sturdevant we have another musical evening planned. J. Michael Orange on acoustic guitar and Vince Hyman on keyboard will present a variety of songs popular during the 60s and 70s. They will invite us to sing along at times.

**Saturday, March 2**

**2 pm, Wellington**

Isles Ensemble

**Wednesday, March 20**

**7 pm, Wellington**

Lori Sturdevant

**Thursday, March 21**

**7 pm, Wellington**

J. Michael Orange

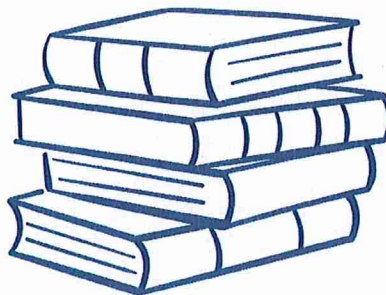
Together with the movies highlighted elsewhere in this issue, March should prove to be an intriguing and entertaining month at Becketwood.

---

## LIBRARY

### NEW BOOKS FOR MARCH

#### FICTION



#### ***BRIGHT YOUNG WOMEN***

by Jessica Knoll

In 1978 a murderous rampage occurred in a Tallahassee sorority. Across the country, a woman is convinced that the same man killed her friend. She and the sorority president join forces to prove who the murderer is and condemn tabloid coverage of serial killers at the expense of those killed. (Mystery)

#### ***SATURDAY NIGHT AT THE LAKESIDE SUPPER CLUB***

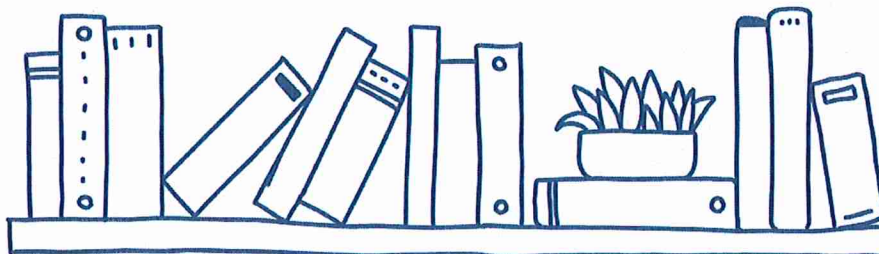
by J. Ryan Stradal

From the New York Times bestselling author J. Ryan Stradal, a story of a couple from two very different restaurant families in rustic Minnesota, and the legacy of love and tragedy, of hardship and hope, that unites and divides them.

#### ***THE MYSTERY GUEST***

by Nita Prose

Molly Gray's position as Head Maid at the Regency Grand Hotel gives her access to the press conference in which a noted author is murdered before he can make a much-anticipated announcement. Molly's history with the author becomes a valuable resource in uncovering who is responsible for the murder. (Mystery)



## **NON-FICTION**

### ***THE SHOWMAN***

by Simon Shuster

Having followed Volodymyr Zelensky's rise from television comedian to president of Ukraine, a Time Magazine correspondent provides an unvarnished character study of an imperfect leader who has used his grit and media savvy to fend off the Russian invasion and shore up fragile foreign support.

### ***DIFFER WE MUST: How Lincoln Succeeded in a Divided America***

by Steve Inskeep

Lincoln's skill as a speaker and communicator remains second to none. The historic Gettysburg Address and his Second Inaugural Address stand alongside few other public speeches in American oratory. But his strength was talking to people, especially those with whom he most disagreed. Without them, he "couldn't become America's sixteenth president." (Donation)

### ***THE LAST FIRE SEASON: A Personal and Pyronatural History***

by Manjula Martin

Martin explores "living inside a damaged body on a damaged planet" in memoir and journalism. From August through November 2020, over 9,000 forest fires burned over 4 million acres in California in an unusually intensive season complicated by climate change. It is an informative, sobering yet hopeful account.

## **LARGE PRINT**

### ***REMARKABLY BRIGHT CREATURES***

by Shelby Van Pelt

Even if you are not a fan of anthropomorphic relationships, you may still find this novel touching and poignant, as a widow and the octopus she cares for strive to coexist. The book explores redemption, aging, loss, and grief in the numerous quirky relationships in a small Washington State seaside village where there is little anonymity. (Mystery)

## **LARGE PRINT Continued**

### ***FIRST LIE WINS***

by Ashley Elston

In this mystery/thriller, con artist Evie Porter uses a variety of pseudonyms and personas to carry out the assignments given to her by Mr. Smith, the head of a mysterious criminal syndicate. Her life gets complicated when she becomes attracted to one of her "marks." (One of Reese Witherspoon's Book Club choices.) (Mystery)

---

**All movies are at 7 pm in the Wellington Room  
Sponsored by the Program Committee**

### **Flick Faves**

**Presented by Greta Berg and Rich Brown**



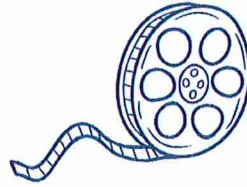
**Sunday, March 3**

#### ***Juno***

*Juno* is the story of an accidental pregnancy. It won an Oscar for its unpredictable, hilarious original screenplay. This is an indie movie with a great cast, a tiny budget, and a big heart. "One of the best pictures of the year." – Roger Ebert

(2007, Rated PG-13, Comedy/Drama, 1h 36m)

## Alternative Cinema Presented by the Rydens



**Sunday, March 10**

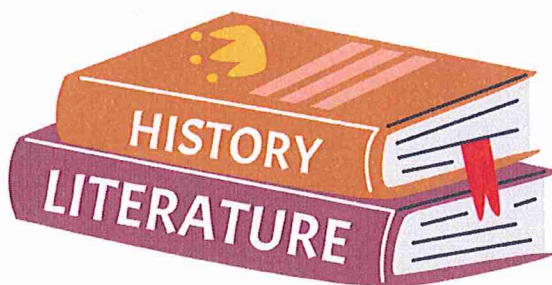
### ***Woman in Motion* – Celebrating Women's History Month**

Featuring Nichelle Nichols' (*Star Trek's* Lt. Uhura) biography and her eventual partnership with NASA. In 1977 Nichols was hired by NASA to recruit the nation's best and brightest for the Space Shuttle Program. Also, her goal was to bring more qualified women and people of color to the space program. (2019, Not Rated: Biography, Documentary)

## **March Is Women's History Month**

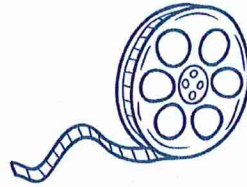
Peggy Ryden

"The most difficult thing is the decision to act; the rest is merely tenacity," Amelia Earhart (1897-1937?), aviation pioneer. From History.com: In 1980, following earlier grassroots celebrations, President Jimmy Carter "issued the first presidential proclamation declaring the week of March 8 as National Women's History Week. The U.S. Congress followed suit the next year, passing a resolution establishing a national celebration. Six years later, the National Women's History Project successfully petitioned Congress to expand the event to the entire month of March." Check out the following website for more information: <https://womenshistorymonth.gov/>



---

**Alternative Cinema  
Presented by the Rydens  
Continued**



**Sunday, March 17**

***The Miracle Club – Celebrating St. Patrick’s Day***

Set in 1967 Ireland, three women sign up for a talent contest at the local parish. The prize is a trip to Lourdes, France, the pilgrimage site for miracles; each woman needed a miracle in her life. Filmed in Ireland, where a small seaside village sets the intimate tone for this beautiful film. International Film – Ireland, UK (2023, Rated PG-13: Comedy, Drama) Click on this link for additional movie information

**Sunday, March 24**

***Midnight in Paris***

An uninspired Hollywood writer vacationing in Paris finds his after-midnight walks bring an unusual source for his creativity. Each night, at the stroke of midnight, he’s transported back in time to 1920s Paris where he meets Gertrude Stein, Hemingway, Picasso, the Fitzgeralds, and more. Directed by Woody Allen. (2011, Rated PG-13, Comedy, Fantasy, Romance)



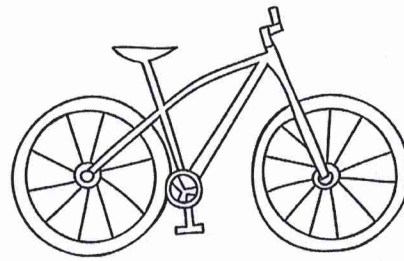
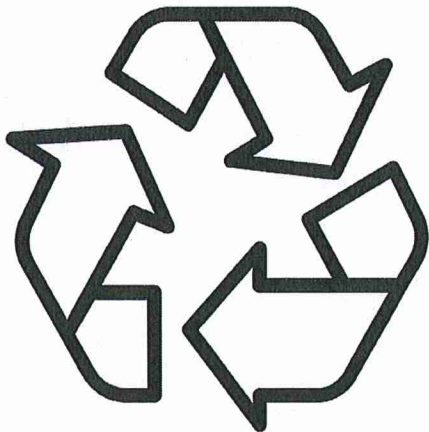
---

## Recycling Tip of the Month

Jon Riehle

I was recently in one of the recycling rooms updating some information. A bag of recyclables fell over and a large plastic container with a lid fell out onto the floor. So far, so good – the container and lid were recyclable plastics. But, when I picked it up to put it back in the bag, I noticed it seemed extra heavy and it rattled. I took off the lid and found a steel soup can inside! While a clever way to reduce the volume of one's recycling, it's the wrong approach for making the recycling process go well. The workers on the recycling conveyor belts don't have time to open up such containers and look for hidden "contraband," so that soup probably wouldn't have been recycled properly and worse, would have contaminated the plastics collected for recycling. The takeaway: please don't mix different materials. Keep them separate.

Thanks for recycling!



## Bike News: Spring Cleaning?

Jon Riehle

Do you have a bike in our garage? In a bike rack? When was the last time you rode it? If it has been more than a year or two, do you think you will dust it off, pump up the tires, and take it out for a spin? If that is unlikely, please consider giving up your bicycle. Rack space is limited, so it can be a puzzle to find space for new Members coming in with bicycles.

If it's time to give up your bike, you have choices: give it to a family member or a friend. Offer it to a charitable organization. (I gave a bike to St. Paul's Center for Victims of Torture a few years ago.) Or your bike can go to Full Cycle, 3515 Chicago Ave. S., a "bicycle recyclery." Their mission is to offer "support and connection to unhoused youth." They train young people to repair bicycles, thus teaching skills and reducing waste. I have taken Members' bikes there as well as one of my own. My current bike is one I purchased there two years ago.

So please think about it. And if you would like, I am willing to take your bike to Full Cycle. Just let me know.

**The March Town Hall Gathering** is scheduled for **Tuesday, March 5 at 7:30** in the Wellington Room with the "Community Conversations" team reporting to the Membership for the first time.

## **March Shopping Trips**

**Monday: 18**  
Costco (Eagan)

**Tuesday: 5, 12, 19, 26**  
Highland Village, Minnehaha Mall

**Tuesday: 5**  
Trader Joe's (Bloomington)

**Wednesday: 13**  
Hampden Park Co-op  
(Ride the swimming bus)

**Thursday: 7**  
Highland Village/Oxendale's

**Thursday: 21**  
Highland Village/Seward Co-op

**Thursday: 14, 28**  
Highland Village and Cub



## **March Birthdays**

HAPPY

BIRTHDAY

2 Carol Bechtel  
2 Nancy Beecher  
4 Elaine Kirk  
4 Katherine Richardson  
5 Carol Mockovak  
5 Jim Sulerud  
7 Roberta Pisa  
11 Shirley Ochi-Watson  
13 Emily Slowinski  
16 Clare Fossum  
17 Marti Heath  
17 Pat Mingo  
19 Sandra Ottley  
20 Cher Sulerud  
21 Diane Ballentine  
21 Kathy Moir  
21 Rick Weber  
21 Margee Wheeler  
21 Joel Wiberg  
22 Ray Mikkelson  
24 Cathie Nicholl  
24 Mary Taylor  
25 Judith Maddux

## Committee Meetings

Committee	Time	Location	Date
Art Committee	1:30 pm	WDR	3rd Wednesday
Board of Directors	1:30 pm	WR	4th Tuesday
Buildings	2 pm	WDR	2nd Tuesday
Becketwood Buzz	Noon	CR	Every Thursday
Communications	2 pm	WDR	1st Wednesday Feb., Apr., June, Aug., Oct., Dec.
Creative Arts	10:45 am	CC	2nd Tuesday of every third month
Diversity, Equity & Inclusion (DEIC)	10:30 am	EDR	1st Friday
Environment	1:30 pm	WR	1st Thursday
Excursion	10:30 am	EDR	2nd Wednesday
Finance	2:30 pm	WDR	3rd Tuesday
Food Service	10:30 am	WDR	3rd Tuesday
Gardens	12:30 pm	KS	4th Monday
Grounds	1 pm	WR	1st Tuesday
Interior Design	1 pm	CR	1st Tuesday
Investment	2:30 pm	WDR	2nd Thursday Jan., Apr., July, Oct.
Library	9:30 am	WDR	3/4, 4/1, 4/29, 6/3, 7/1, 7/29, 8/26, 9/30, 11/4, 12/2
Low Vision Group	4 pm	CC	1st Thursday
MAC (Member Activities Council)	1:30 pm	WDR	2nd Monday Even Months
Marketing	12:30 pm	WDR	2nd Tuesday
Pantry	3 pm	CS	As Needed
Program	9 am	EDR	2nd Friday
Reserve and LRP	2:30 pm	WDR /Zoom	3rd or 4th Wednesday Jan., Apr., Aug.
Spiritual Resources	3 pm	WDR	1st Monday
Tree & Shrub	2 pm	winter CC, KS	4th Monday
Turf Committee	1:30 pm	CR	3rd Wednesday
Wellness	1:30 pm	WR	1st Wednesday Sept. - May

Chapel - CHP

Coffee Shop - CS  
Conf Room - CR  
Craft Center - CC

Kensington SQ - KS  
Wellington Rm - DR

E. Dining Rm - EDR  
W. Dining Rm - WDR  
Windsor Rm - WR



# Becketwood Times

Becketwood Cooperative

4300 West River Parkway South, Minneapolis MN 55406

Tel: 612-722-4077 \* Fax: 612-722-1878 \* [www.becketwood.com](http://www.becketwood.com)

